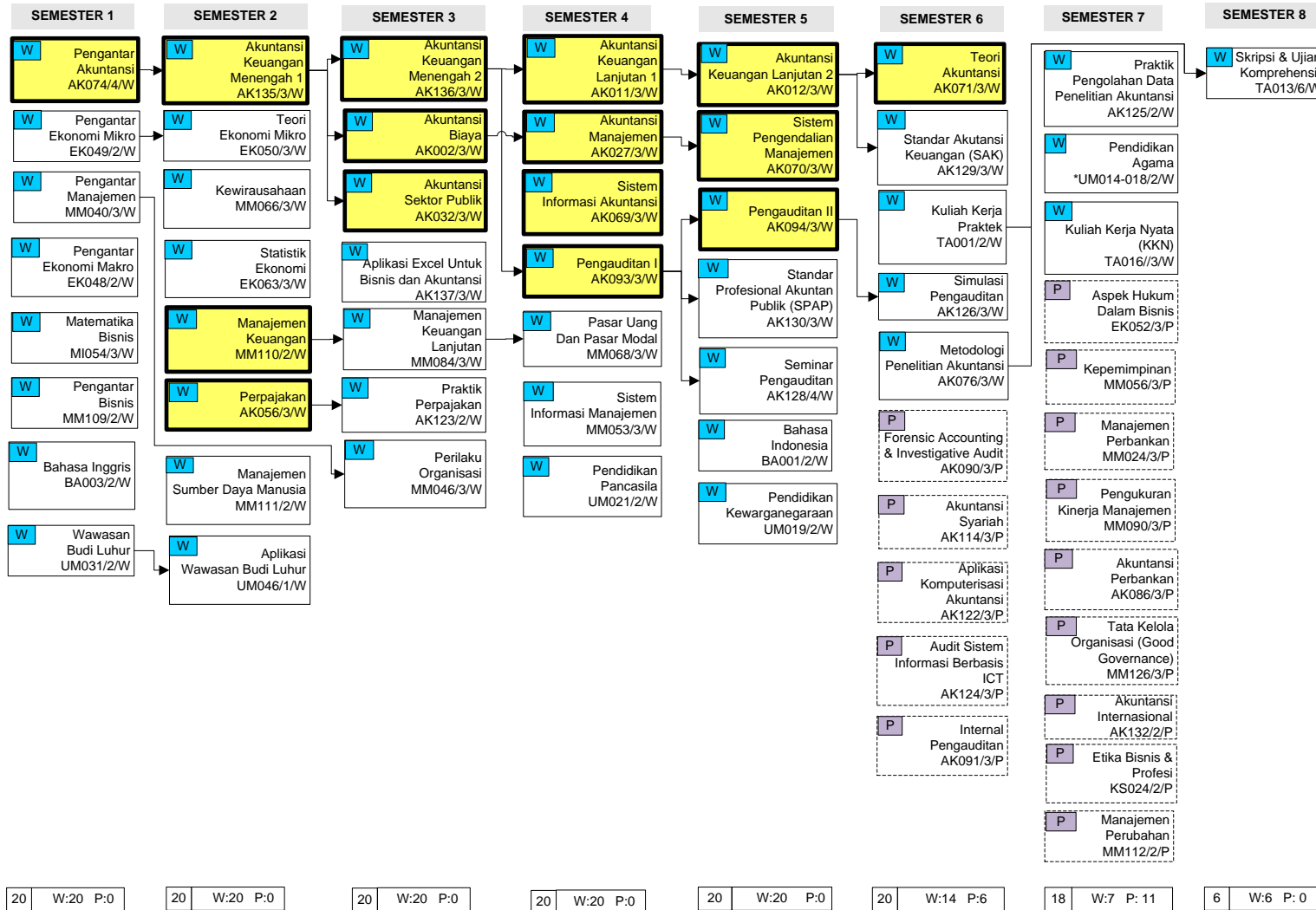


Bagan Prasyarat Mata Kuliah – Kurikulum 2014 (Berbasis KKN)

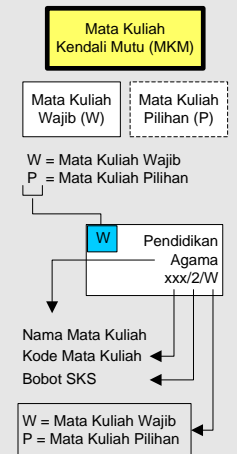


Fakultas Ekonomi dan Bisnis
Universitas Budi Luhur

Program Studi Akuntansi
Konsentrasi Pengauditan



Total SKS = 144 SKS
Wajib = 127 SKS
Pilihan = 17 SKS

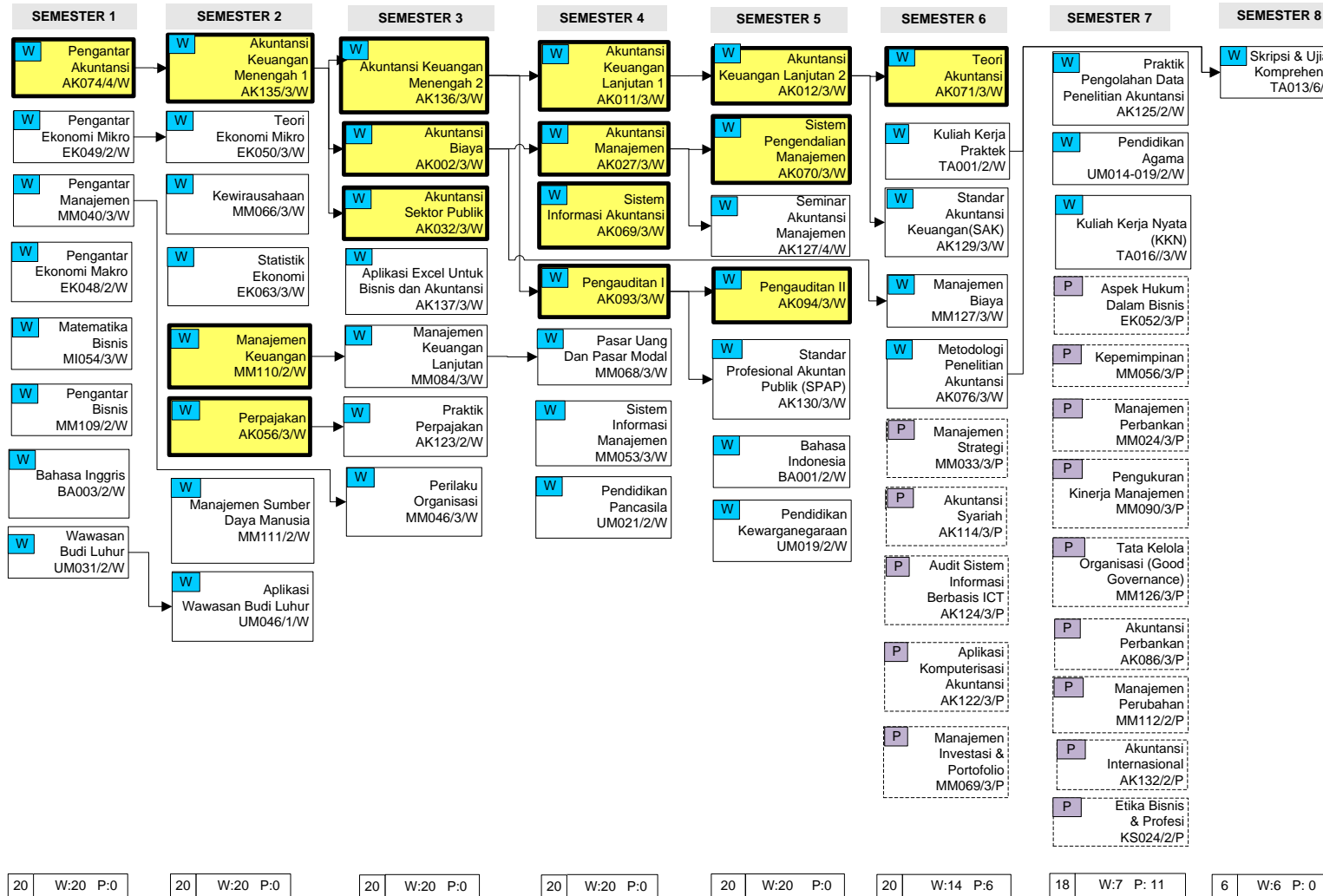


Keterangan:
*UM014 = Budha
UM015 = Hindu
UM016 = Islam
UM017 = Katholik
UM018 = Protestan
UM034 = Kong Hu Chu

Syarat SKS Lulus Minimum :
KKP = 90 SKS
KKN = 110 SKS
TUGAS AKHIR = 138 SKS

Program Studi Akuntansi
Fakultas Ekonomi
Universitas Budi Luhur
Jakarta, 29 Agustus 2017

Dicky Arisudhana, SE, MM, Ak, CA

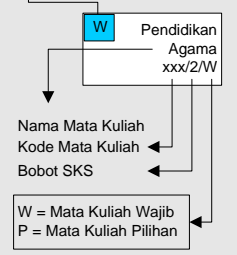


Total SKS = 144 SKS
Wajib = 127 SKS
Pilihan = 17 SKS

Mata Kuliah Kendali Mutu (MKM)

Mata Kuliah Wajib (W) Mata Kuliah Pilihan (P)

W = Mata Kuliah Wajib
P = Mata Kuliah Pilihan



Keterangan:
*UM014 = Budha
UM015 = Hindu
UM016 = Islam
UM017 = Katholik
UM018 = Protestan
UM034 = Kong Hu Chu

Syarat SKS Lulus Minimum :
KKP = 90 SKS
KKN = 110 SKS
TUGAS AKHIR = 138 SKS

Program Studi Akuntansi
Fakultas Ekonomi
Universitas Budi Luhur
Jakarta, 29 Agustus 2017